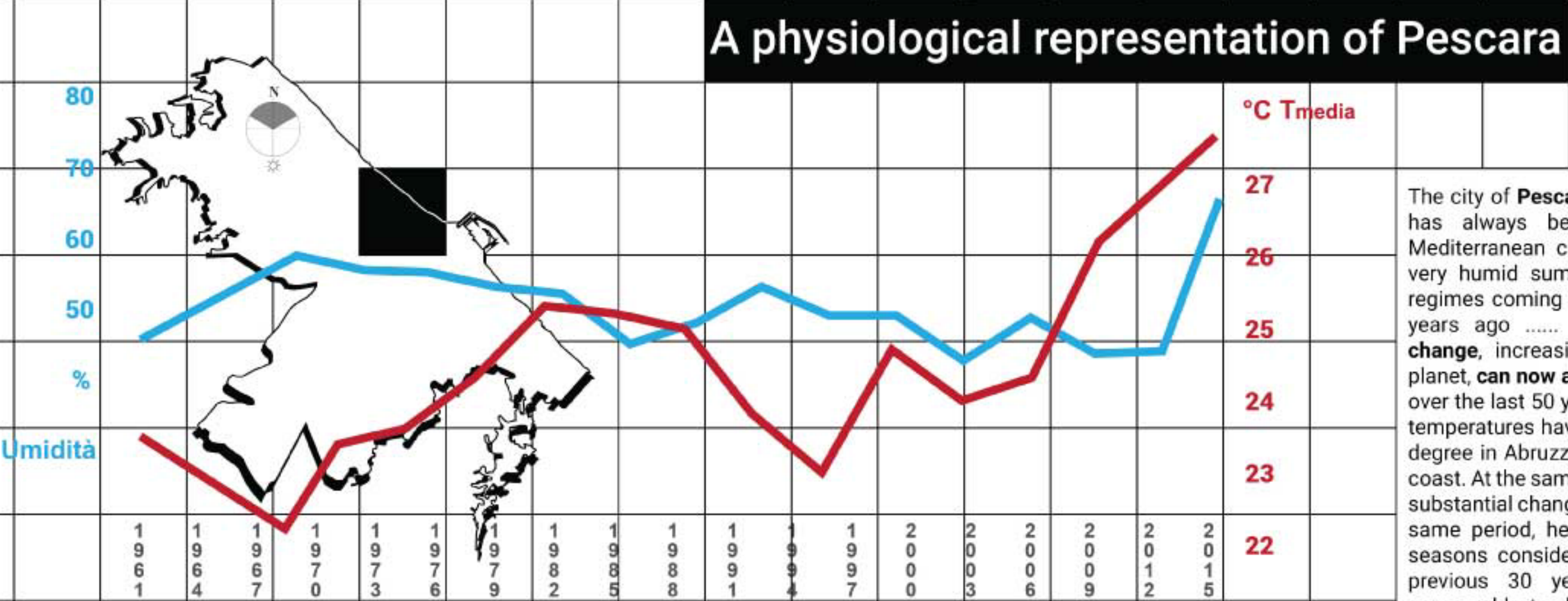
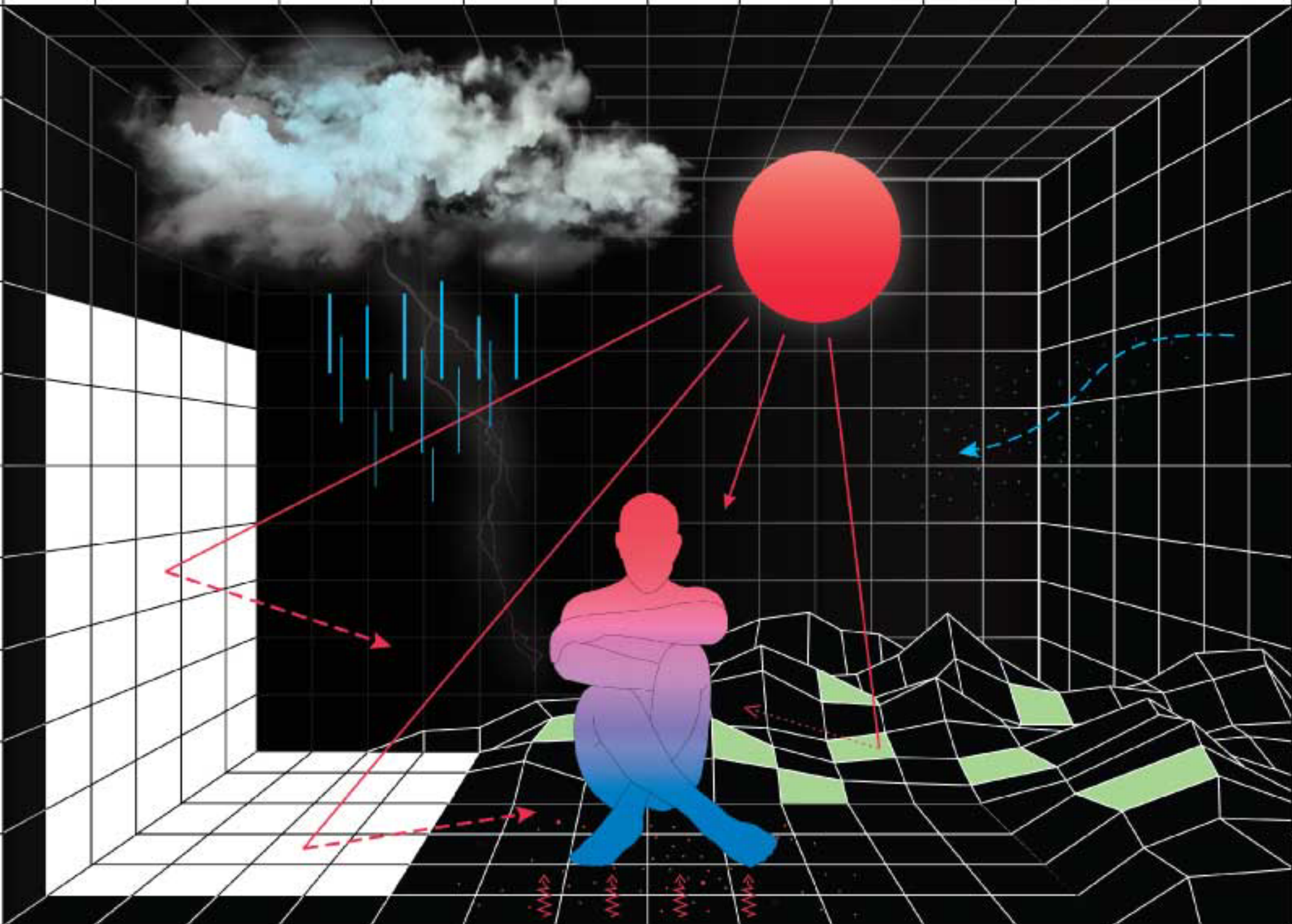


THERMAL VISIONS

architetti
ZEDAPLUS

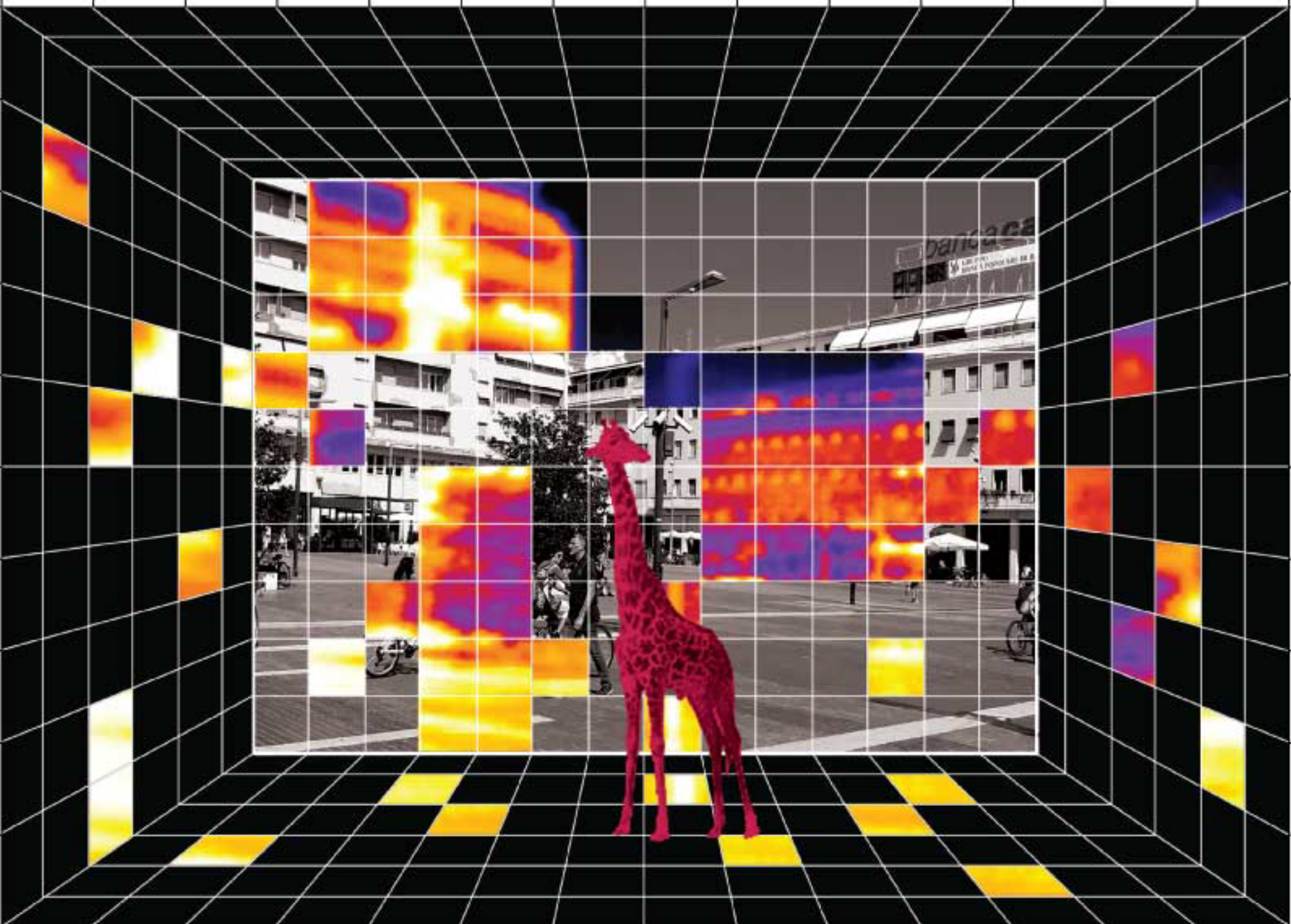
Erica SCALCIONE
Fabrizio CHELLA

REPRESENTATION OF THE CLIMATIC
STRESS THAT MAN UNDERGOES
FROM THE REFERENCE ENVIRONMENT



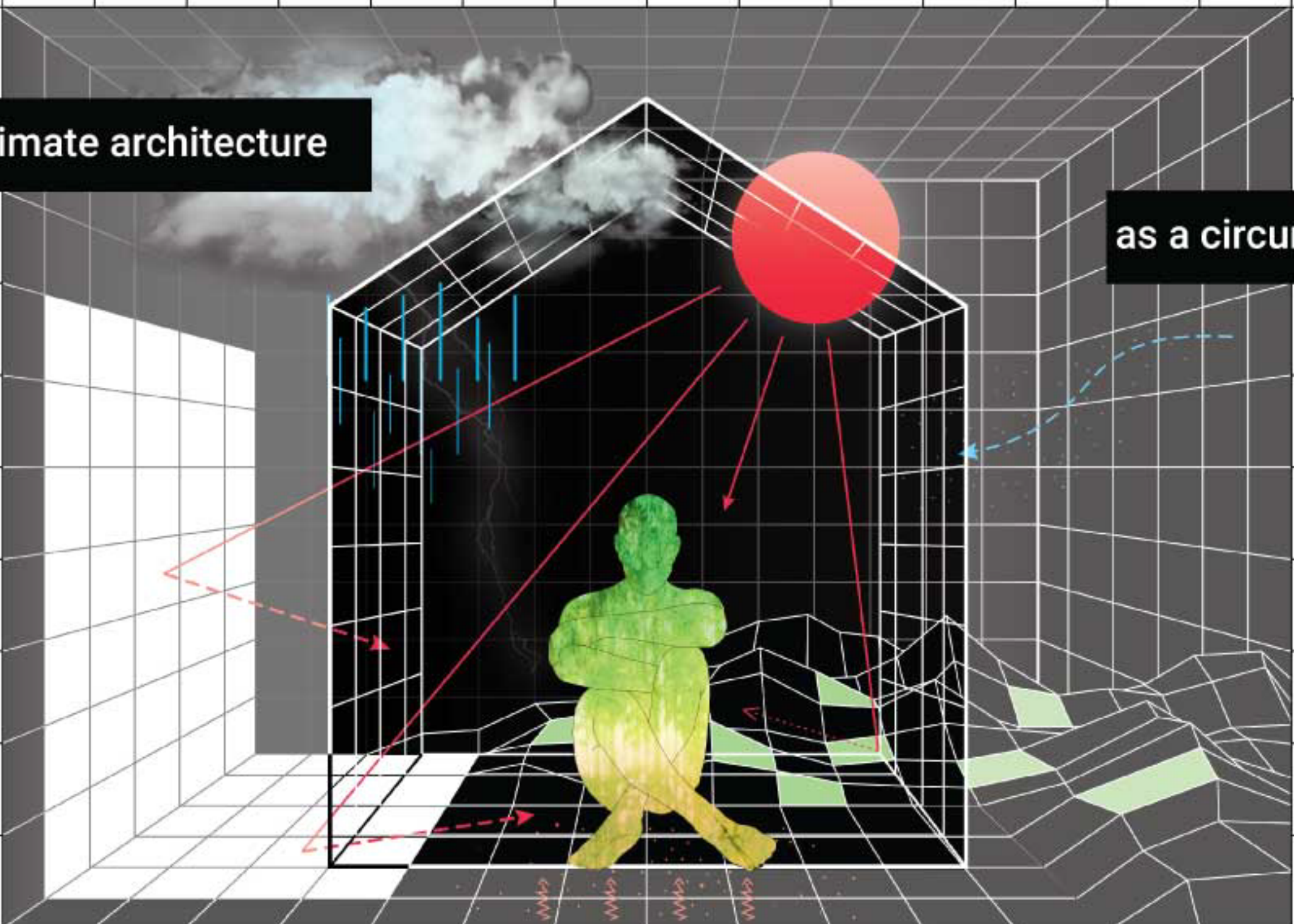
The city of **Pescara** (42 ° 27' N; 14 ° 13' E) has always been characterized by a Mediterranean climate, with hot but also very humid summers due to the breeze regimes coming from NE. That until a few years ago **The effects of climate change**, increasingly affecting the entire planet, **can now also be found here**. In fact, over the last 50 years (1960-2015) average temperatures have increased by about one degree in Abruzzo, with peaks right on the coast. At the same time there have been no substantial changes in rainfall data over the same period, hence making the summer seasons considerably more arid than the previous 30 years and, although not comparable to desert areas, far from the conditions of a Mediterranean climate one would normally imagine.

42° 27' N 14° 13' E



Thermal Vision

Climate architecture



as a circumscription of a portion of the reference climate environment

Piazza della Rinascita



THERMAL DESIGN FOR SHADING AND SUMMER
CONDITIONING THROUGH THE USE OF
EVAPORATIVE COOLING THERMAL DEVICES

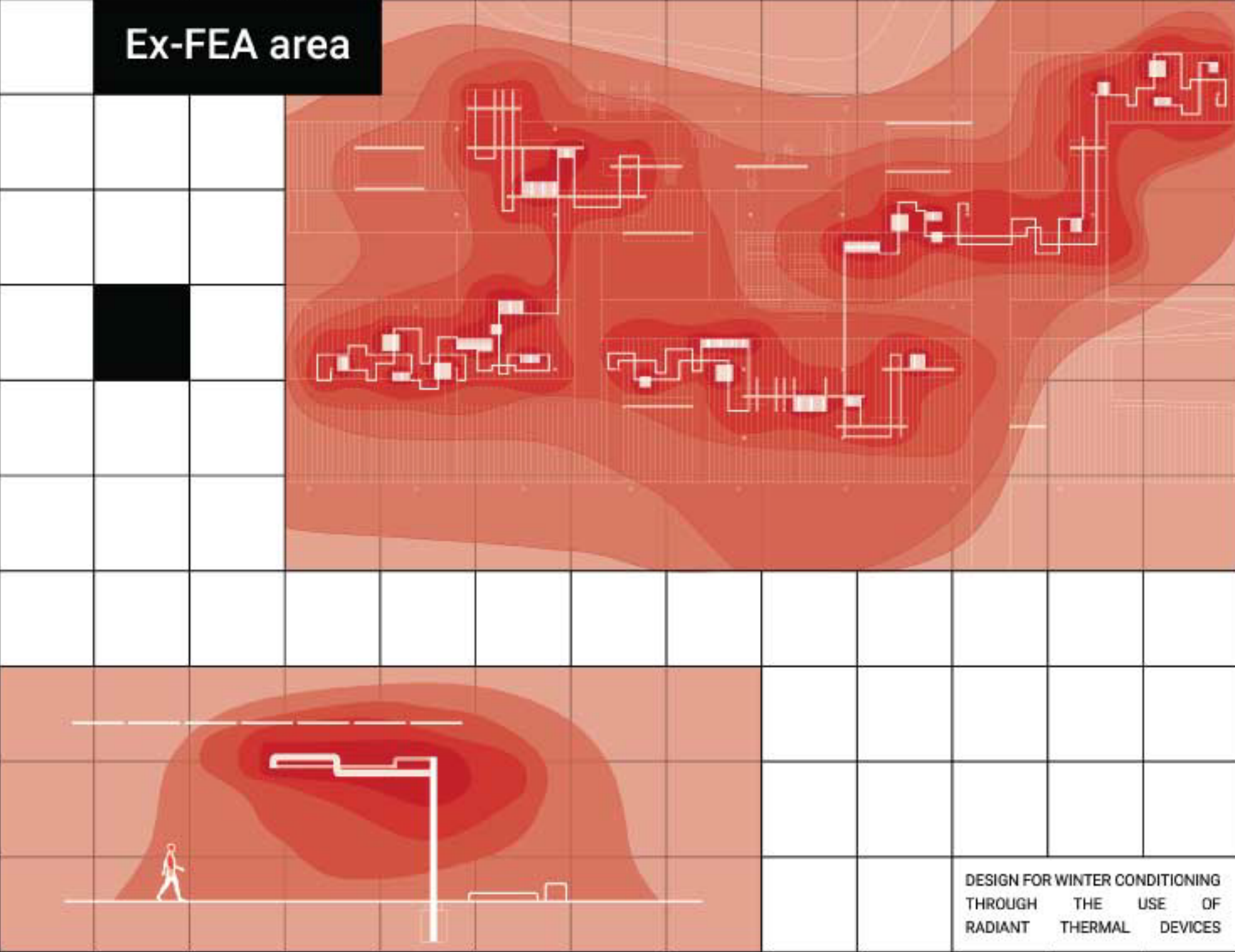


The "THERMAL VISIONS" research conducted by **ZEDAPLUS Architects** on the city of Pescara (Abruzzo), is the physiological representation of some **Fragile Landscapes** that characterize the city, a vision of places that can only be perceived through the 'senses'.
The constant attempt to "react" to the current climatic condition has determined the development and uncontrolled use of technologies exclusively aimed at making mankind's life easier, even if only in part, and with the consequence of having generated **global climatic confusion**. The artificial abuse of climate has inadvertently procreated architectural spaces which are structured in overlapping climatic volumes belonging to farway latitudes, with no local or cultural integration and blending in logic.

We all agree that there is a climate change problem today, but how can we deal with it?

It is in trying to answer this question that the **"VISIONS" project** was conceived. The project includes "visions" for Piazza della Rinascita (the city center square better known as Piazza Salotto) and for the EX-FEA area, an empty urban space overlooking Pescara waterfront, with answers to the issue of climate change through the devices shown in the project. These provocative "visions" **advance by thermal distortions working directly on the climatic matter** while going beyond a traditional vision of architecture made up of only of surfaces and volumes. The idea is to extend the space to other dimensions such as the "empty volume", a volume made up of perceptions and sensations which are able to immerse the body in a physiological path. The projects represent the "sensory" view of the space that goes beyond the real to the ideal.

Ex-FEA area



DESIGN FOR WINTER CONDITIONING
THROUGH THE USE OF
RADIANT THERMAL DEVICES

